

# SiteKiosk 6

Public Access Terminal Software



## Introduction

SiteKiosk is the ideal software solution to securely present web-based content (HTML, Flash, videos, etc.) and applications on public access terminals.

You can use SiteKiosk to individually restrict access to the operating system, system settings, websites, files, folders, and applications.

Your computer will be protected against unwanted manipulation from the time the boot process begins up until the terminal is shut down.

SiteKiosk also allows you to manage your machines remotely and enables you to charge your customers for using your kiosk terminals and services.

## SiteKiosk is the right choice for

- Kiosk & Internet terminals
- Company access to Internet & Intranet
- Internet cafes
- Arcades/gambling stations
- Library PCs
- PCs in schools and colleges
- City information terminals
- Ticket kiosks
- Showcase advertising
- PCs on fairs & exhibitions
- Public Internet banking
- Customer PCs in retailing

## Focus on Security

### A customer statement:

*"You would not believe how easily a small kid can paralyze an unprotected computer."*

**Example:** Just press the key combination *Left ALT + left SHIFT + Print Screen* and confirm by pressing "OK." This will activate "High Contrast" mode on your computer. (Press the same key combination again to reset the screen.)

While this form of user manipulation seems harmless, it can still cause a negative impact on your business. If a customer does not know how to undo the effects of this key combination, it will deter users from using the kiosk.

You need to ensure that the users of your kiosks will not be able to deliberately or unintentionally corrupt them.

### Start Management

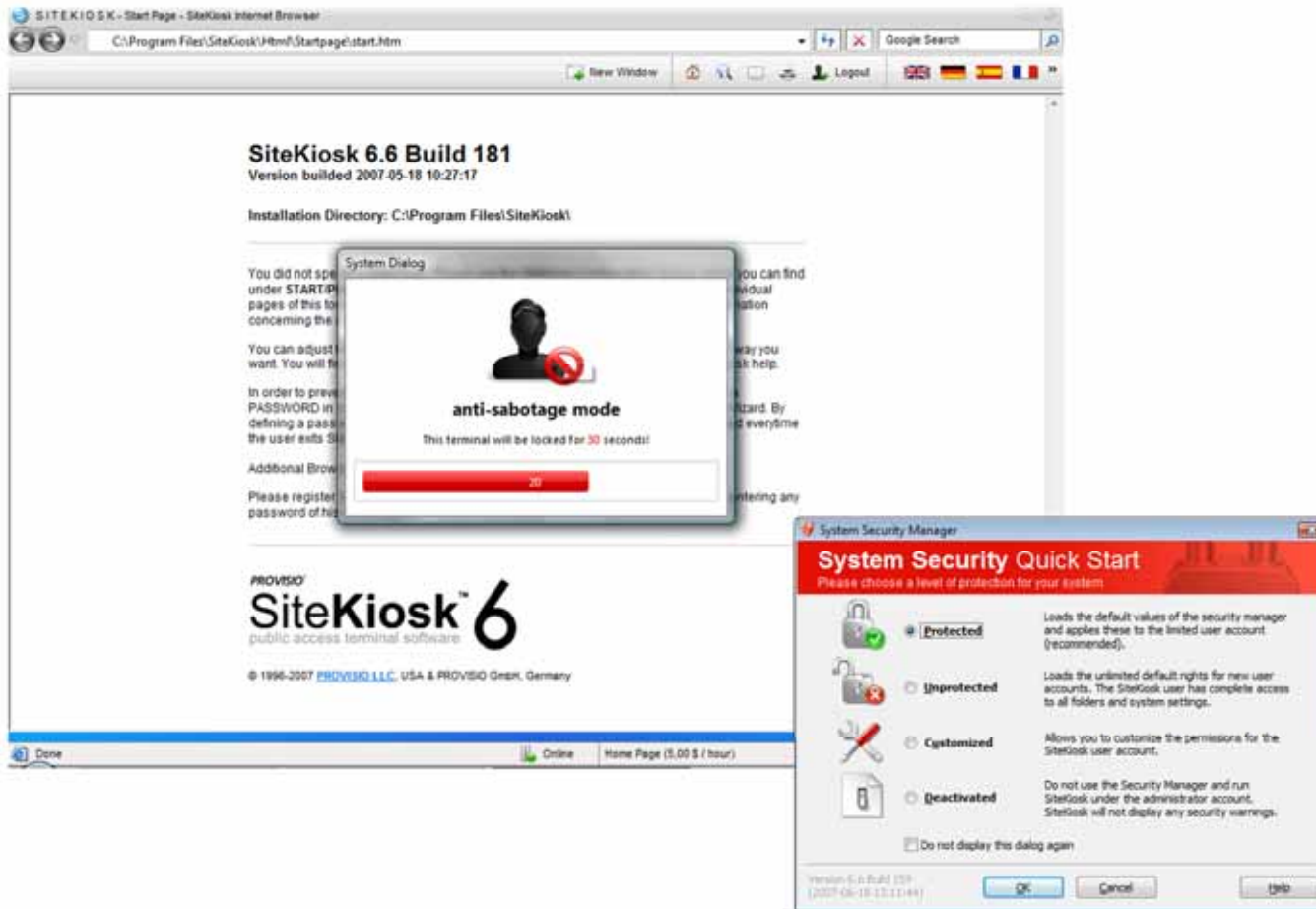
The system will start automatically using the settings you selected. Your system is protected right at the beginning of the boot process.

### Security Management

The multi-step security configuration allows you to limit user access to operating system functions and Internet access.

### Hardware Management

You can restrict or block access to hard drives, keyboard and mouse functions, USB ports, and any attached printers.





## Continuous Operation

If your kiosks terminals are not available, you might sustain serious loss in revenue or damage to your company image.

SiteKiosk provides a great number of internal maintenance features ensuring the smooth operation of your systems.

## Connection Management

Whether you choose an ADSL, ISDN, modem or router connection, SiteKiosk will ensure your Internet connection is stable.

## Crash Detection & Auto Recovery

Crashes, errors, and other problems are detected and resolved instantly.

## Logout Management

SiteKiosk will automatically return to the initial screen (start page) at the end of each session. SiteKiosk resets the terminal to its initial state, by closing all windows and applications, and deleting temporary internet files and cookies.

## Remote Management

Use SiteKiosk's remote maintenance solution, SiteRemote, to monitor the status and availability of your kiosks at all times.

## Screensaver

SiteKiosk's integrated screensaver will be activated after a period of inactivity, and can be set to display specific content (e.g. advertisements, pictures, web pages, videos, etc).



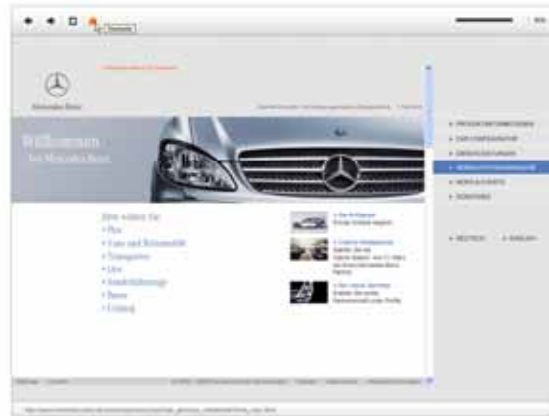
ProKivi Skin



Touchme Skin



Video mail Skin



Mercedes Benz Skin

## Design Templates

SiteKiosk provides you with a variety of design templates that fit your business concept.

Additional free skins and design templates are available for download at [www.siteskin.com](http://www.siteskin.com).

The examples on the left illustrate how skins can be utilized to meet your particular needs.

## Full Screen Mode

SiteKiosk can display your content full screen and can limit access to specific URLs, like your company's web site.

## Start Page Templates

You can create your own HTML, Flash, PowerPoint, or PDF document to use as your start page or select one of the Start Page templates that is included with SiteKiosk.

## Browser Designs

Use the different browser designs to adjust the appearance and functionality of the browser window.

Different browser designs can be displayed according to websites being accessed.



```

<!-- Script -->
<table id="tblBack" cellspacing=0 cellpadding=0 style="display:inline;
margin-left:3px; width:55px; margin-right:3px;">
  <tr>
    <td align="center">
  </tr>
  <td id="BackDescr" style="font-face:Arial; font-size:8pt; vertical-
align:middle;" align="center">
</table>
<!-- Script -->

```

## Customize to Fit Your Needs

SiteKiosk is designed with the user in mind, so programming skills are not required for use. Occasionally, certain projects are more robust and require software that includes a larger degree of adjustability.

With the SiteKiosk software, all visible program components are based on open-source scripting and description languages such as JavaScript, XML and HTML.

As these languages are standardized, a web developer can adjust the software to fit your individual needs.

## SiteKiosk Object Model

The SiteKiosk Object Model expands the regular set of JavaScript commands. By using SiteKiosk-specific objects, events, methods, and properties, it gives your developers the opportunity to completely reprogram the software.

For instance, the following command will reboot the computer:

```
SiteKiosk.RebootWindows()
```

SiteKiosk includes a comprehensive help file for using the Object Model, including useful examples.



## Quick and Easy

Configuring SiteKiosk is fast and easy. No programming skills are required as you are taken step by step through the setup process

## XML Configuration Files

The configuration file is saved in the XML format (file extension .skcfg), which allows for more flexibility in editing and processing the information.

## Extensive Documentation

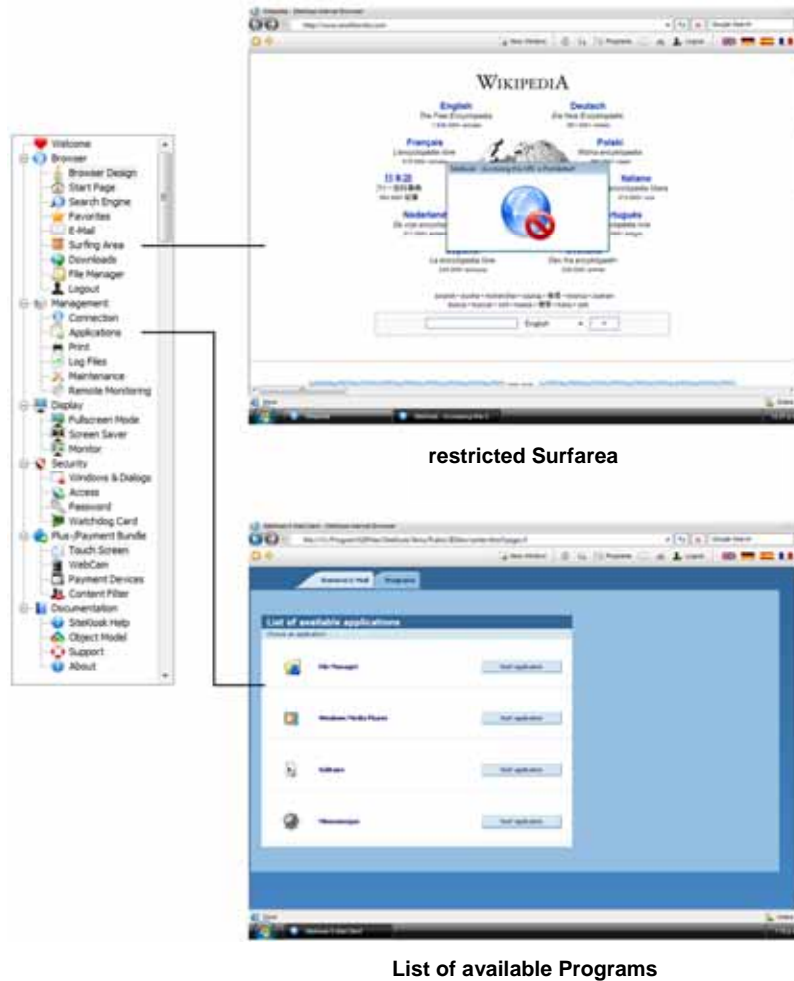
Each section of the Configuration Wizard features a "Help" button, which will provide you with more detailed instructions and additional information concerning the functions SiteKiosk has to offer.

## Online Support Center

For helpful tips and detailed answers to numerous questions, visit our online support center at [www.provisio.com](http://www.provisio.com).

## Remote Configuration

Use the SiteRemote service to make changes to your terminal's configuration from a remote location.



## Basic Functions

We offer SiteKiosk in three different license packages: Basic, Plus Bundle and Payment Bundle

The basic features cover the necessary functionality to protect your kiosk. All license packages include the basic features.

The basic features are all critical security and maintenance functions, and include the integrated System Security Manager for Windows XP/2000/Vista.

The following is a description of some of the program components included in the Basic Version:

### Security Manager

The Security Manager will allow you to safeguard your Windows XP/2000/Vista operating system quickly and efficiently.

### Restrict the Surfing Area

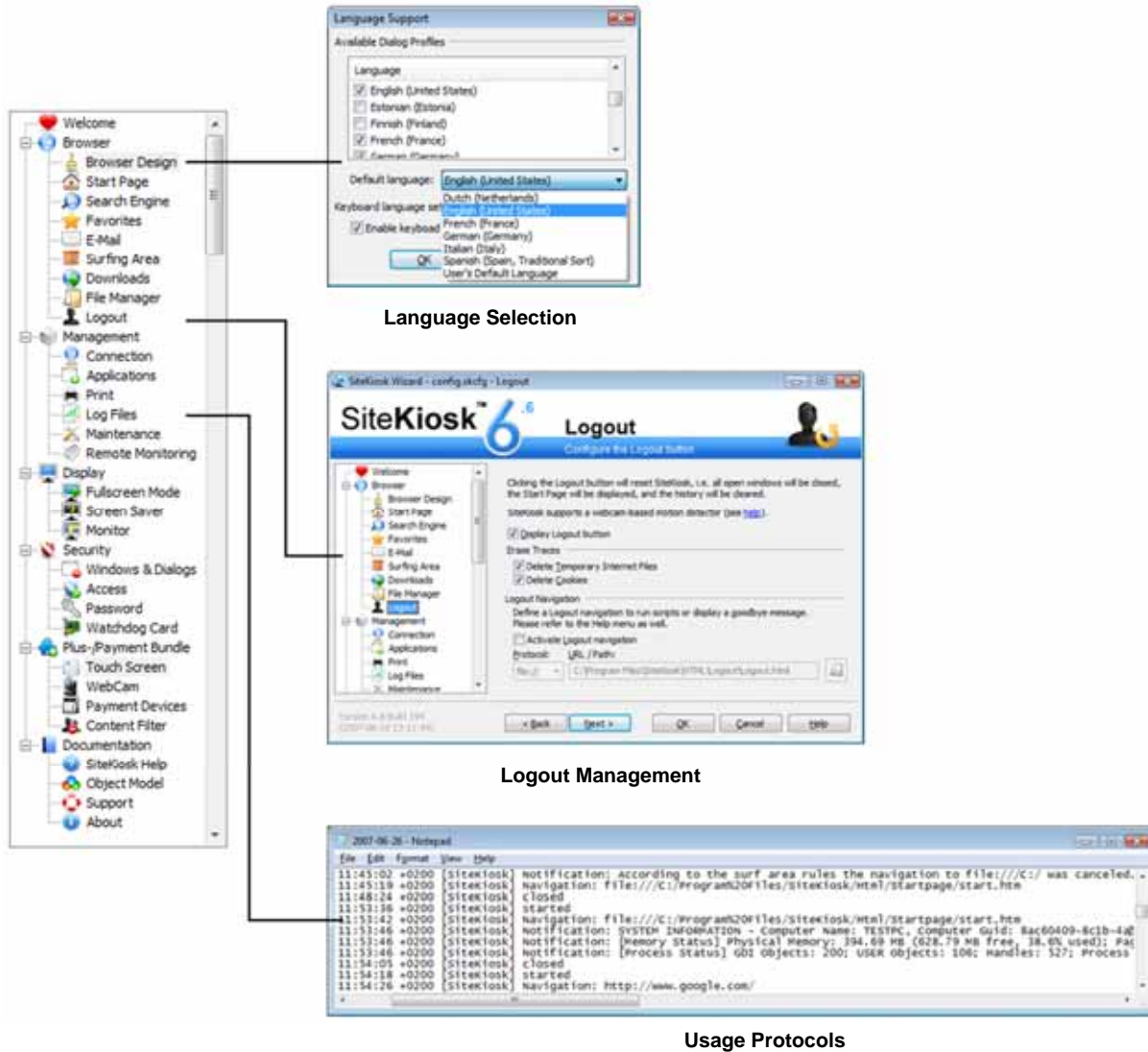
This function allows you to specify which local paths (file) or Internet addresses (http) your users will be able to access.

### Programs & Games

Users will be able to launch permitted executable programs and games from the menu bar, the Start menu or directly from within web pages.

### Printing

SiteKiosk monitors all local and network printers and their print jobs. You will be able to charge users for the printing service.



## Basic Functions: Continued

### Download Manager

You can limit the user from downloading files to the terminal or restrict it completely. For instance, you can limit downloads from certain websites/URLs.

### File Manager

The File Manager feature provides users with a tool to perform limited and secure file operations.

Working with Windows XP and Vista, you can also use the file manager to allow users to burn data to CD's.

### Second Monitor

Display and rotate different media elements (AVIs, images, Web pages) or advertisements on an optional second monitor.

### Languages

The Basic Version includes 20 different display languages for the interface, which can be selected by the user. SiteKiosk will automatically return to the default language after the session has ended.

Displayed language information is stored in XML files, which makes it possible for you to alter or expand your language options.

### Remap the Keys of the Keyboard

SiteKiosk allows you to remap the functions of each individual key on your keyboard. You will find this feature helpful if you use special keyboards.



Configuration: Touch Screen Keyboard



Browser View

## Touch Screen Support

Touch screen support is a feature that is part of the Plus and Payment Bundles.

With SiteKiosk's touch screen support, the user can conveniently enter data on the monitor using our integrated touch screen keyboard.

## Predefined On-Screen Keyboards

Included with the software are a number of predefined keyboards, with additional designs and layouts available for download at [www.siteskin.com](http://www.siteskin.com).

## Multi-Language Keyboard Layouts

For multi-language applications, we provide different keyboard layouts (e.g. QWERTZ, QWERTY, and AZERTY for German, English and French).

## Visible & Invisible

Touch screen keyboards can be set to be only visible on certain web pages (e.g. on a form page)

## Individual Keyboard Layouts

SiteKiosk's Skin technology makes creating your own individual layouts easy.

## Usable in Third-Party Application

Touch Screen keyboards will also work with other third-party applications (e.g. Microsoft Word).



without Parental Control



with Parental Control



## Internet Content Filter

SiteCoach is a feature that is part of the Plus and Payment Bundles.

Laws in many countries prohibit public kiosks from displaying certain content (e.g. pornography). This content should not be accessible to the users, which is why SiteCoach, an Internet content filter, was developed and built into the SiteKiosk software.

## Real-time Filtering

Each web page called by the user is checked by a special algorithm and is then either blocked or admitted. This process is performed in real time and without any delay to the user.

## Criteria Database

The criteria filter database contains roughly 700,000 positive and negative domains as well as a large number of word criteria.

## Free Update Function

After each start, SiteKiosk looks for available updates and will update the local criteria database if necessary.

## User Feedback

Users can respond or object to the wrongful blocking of certain Web sites.

## Time Controlled Activation

The filter can be set to activate at certain times during the day.



## Video and Photo E-Mails

SiteCam is a feature that is part of the SiteKiosk Plus and Payment Bundles.

Use SiteCam in combination with a webcam to record and send video clips and photos via e-mail. Voice mail is also possible, provided there is a microphone connected to the PC.

## User-Friendly File Format

For security reasons, SiteKiosk will send all created video files in .asf format, instead of executable files, which would be blocked by the recipient's mailbox.

## High Degree of Compression

30 sec. of video material in AVI format can be equal to 80 MB in file size, but SiteCam can compress those 80 MB down to a manageable file size of approximately 300 KB.

## Seamless Integration

Use the SiteKiosk Object Model to seamlessly integrate SiteCam into your own kiosk terminal solutions.

## Optional Charge

With the features of the Payment Bundle, you can be charge customers an additional fee for using SiteCam to send multi-media messages from the terminal.

## Payment Features

This feature is part of the SiteKiosk Payment Bundle.

Included in the Payment Bundle is an interface which supports a large number of time logging, access control, and automated payment devices. This interface takes control of all coin and bill acceptors, SmartCards, credit card, and debit card readers, prepaid PIN codes, user accounts, etc.

The Payment Simulation feature that is included with the software allows you to test the payment functions without any attached hardware connected.

### Zone Rates

The Zone Rates feature allows you to charge different rates for different Internet addresses/URLs.

### Daily Rates

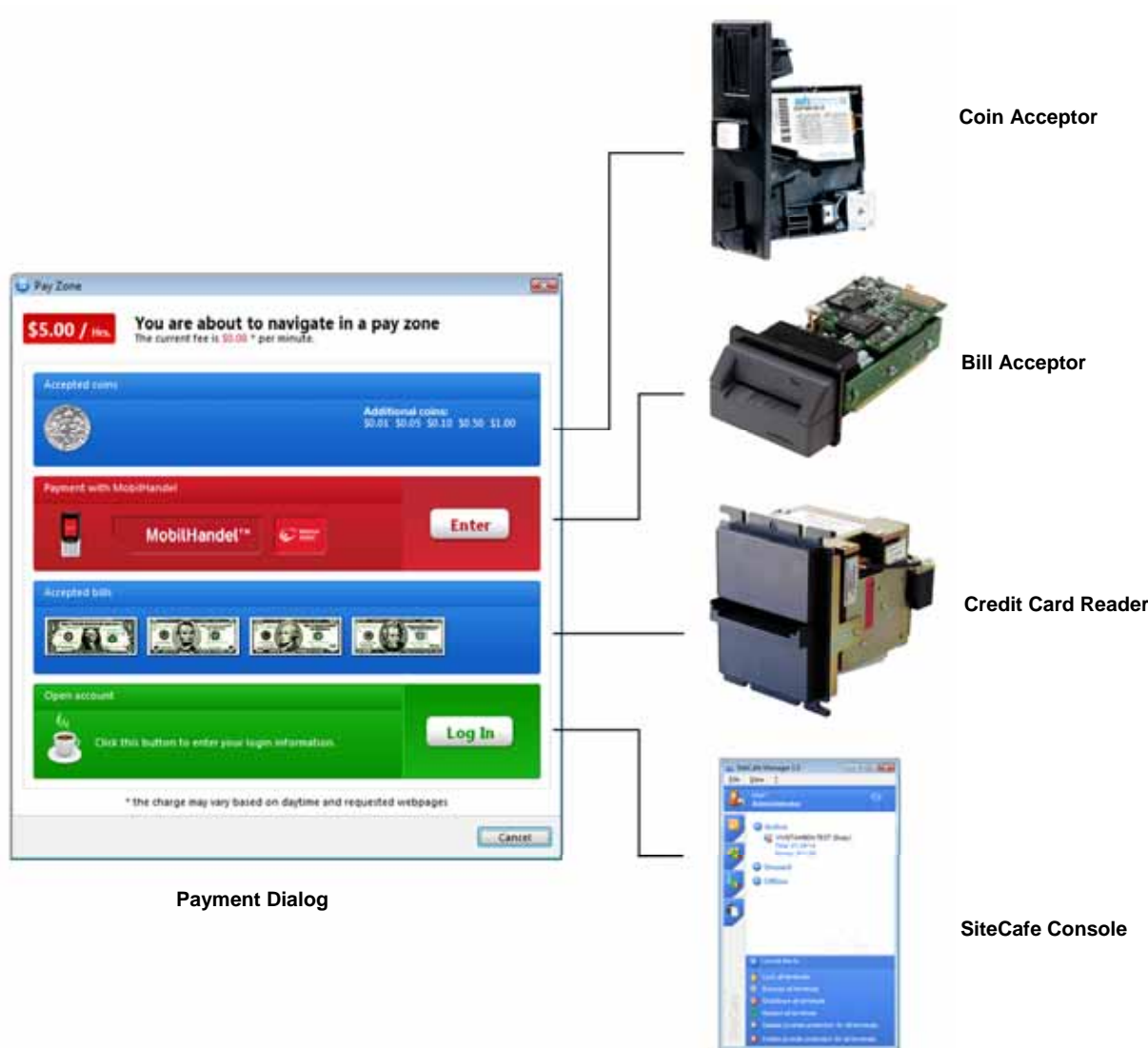
The Daily Rates feature can be set to define different pricing rates for different days and time periods (Happy Hours).

### Service Rates

SiteKiosk may be used to charge for services offered by the terminal, such as burning CD's, sending multi-media e-mails, printing, file downloads, etc.

### Currencies

The SiteKiosk Payment Bundle supports all common currencies.



## Managing Internet Cafes

SiteCafe is a free additional tool that is used in conjunction with the SiteKiosk Payment Bundle.

SiteCafe is specifically designed for managing users in settings such as Internet cafes, arcades, libraries, and schools.

The SiteCafe Manager easily manages several hundred computers as well as thousands of user accounts.

## Database Included

Microsoft® SQL Server 2000 Desktop Engine (MSDE 2000) database will be automatically installed and configured.

## Charging Options

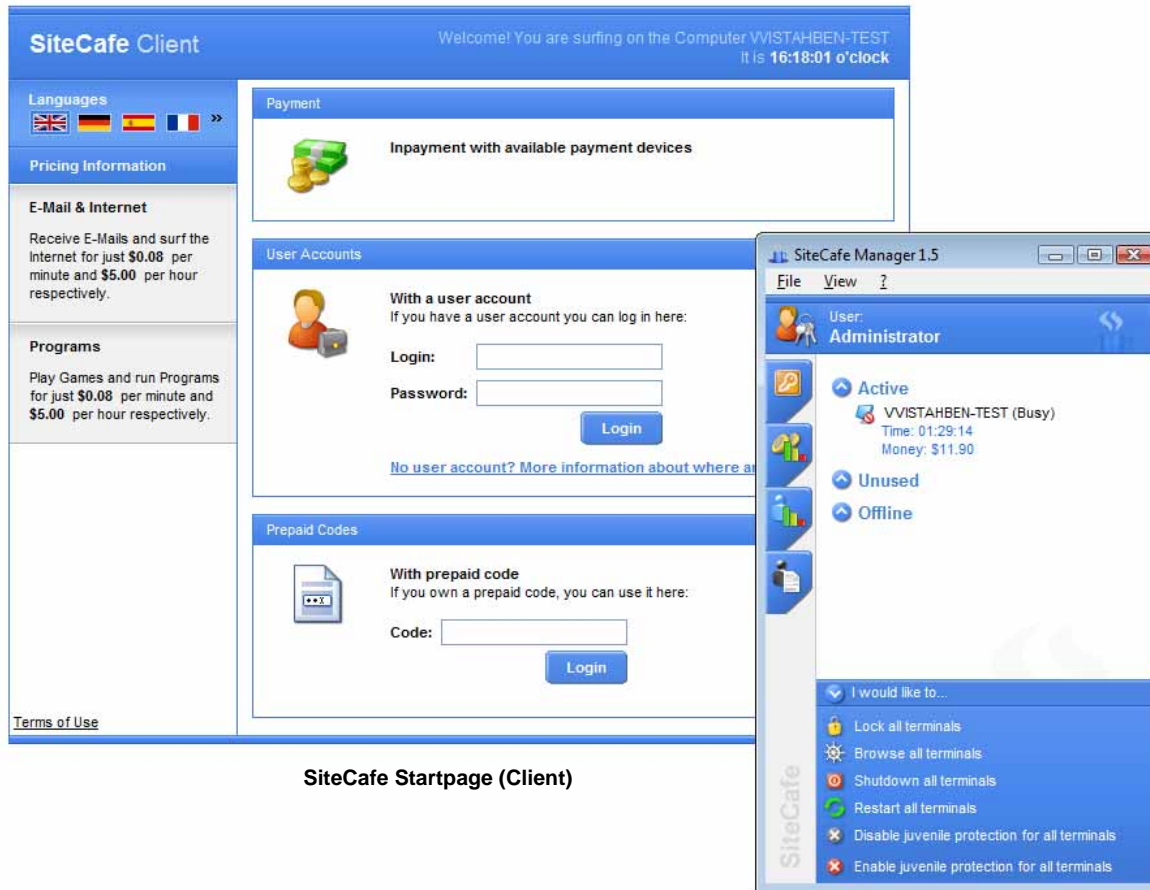
You can select how customers can pay for use of the kiosks: In advance or pay-as-you-go, creating user accounts and prepaid PIN codes, or using currency and credit card acceptors.

## Staff Management

SiteCafe allows you to specifically define your staff's access rights to the SiteCafe Manager interface.

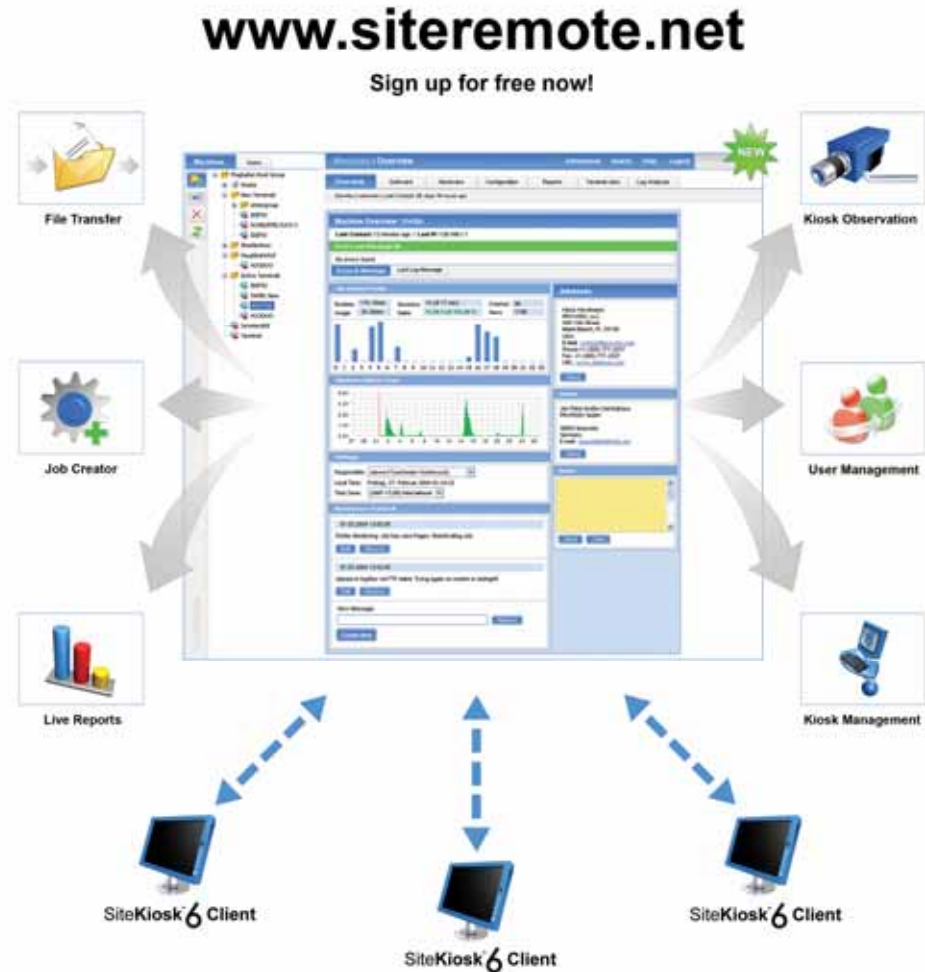
## Real-Time Control

SiteCafe Manager will provide you with a constant overview of all connected terminals. You can release, block, shut down, and view statistics for all of your terminals from a central workstation.



SiteCafe Startpage (Client)

SiteCafe Manager (Server)



## Remote Control

SiteRemote is a software solution that allows the remote access of terminals running SiteKiosk.

Use the SiteRemote web application to view the status of all your Internet terminals and to conveniently perform maintenance operations from a central workstation.

The functions required on the client terminal end are already integrated into the Basic Version of SiteKiosk.

Use of the SiteRemote web application is available at a low monthly lease rate. As an alternative, you may purchase a license for the SiteRemote Server software for installation on your own server.

## Detailed Information Brochure

For more detailed information about the features of SiteRemote, please refer to our PDF brochure on our website. [www.msiami.com](http://www.msiami.com).

## Free 30-Day Trial Access

To ensure that the software is the right choice for your business, we offer a free 30-day trial access to SiteRemote, which is available at [www.siteremote.com](http://www.siteremote.com).

The 30-day trial access allows you to manage up to 50 client terminals and offers 500 MB of data transfer volume, as well as 50 alert text messages.



## SiteKiosk Software (Full Package)

The free trial version contains all available SiteKiosk program features (Basic Version, Plus/Payment Bundle) and is available for unlimited testing. However, the software will briefly interrupt the service at scheduled intervals until a valid license code is purchased.

If the software fits the needs of your business, you can purchase a license code from our online store at [www.msiami.com](http://www.msiami.com).

### Minimum System Requirements:

- Windows XP/2000/Vista
- Internet Explorer 5.5 (IE 7.0 recommended)
- 500 MHz processor
- 128 MB of RAM (256 MB recommended)
- 100 MB of available hard drive space

**File Size:** approx. 15 MB

→

## Try before you Buy!

Minimize your investment risk by fully testing all of SiteKiosk's features and functions prior to purchase.

## SiteKiosk is the right choice for you!

- SiteKiosk software is under constant development since 1997
- An installed software base of more than 110,000 licenses worldwide
- Winner of several key Internet awards
- Ranked 1st in the April 2005 study: *Worldwide Kiosk Browser Analysis*
- Free customer support

## Price Information

For more information on prices and available products, visit us at [www.msiami.com](http://www.msiami.com)